

3333 QUIMBY



*Laurie*  
**Holland**

Principal Broker



 Windermere



**Address:** 3333 NW Quimby Portland, Oregon 97210  
**Schools:** Chapman, West Sylvan, Lincoln  
**Principal Broker:** Laurie Holland | 503 497 5147

On a tranquil forested hillside above the city, adjacent to renowned Forest Park, a new landmark in Portland architecture: 3333 Quimby.

3333 complements and at the same time juxtaposes its natural peaceful setting with dramatic modern design, at once vibrant and striking yet tranquil, harmonious in its natural setting.

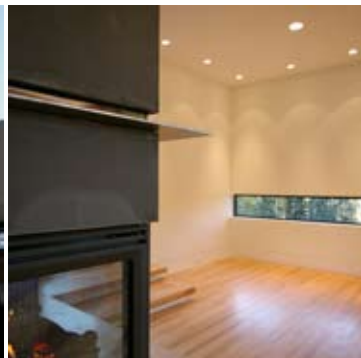
The expansive reach of the panoramic kitchen and outdoor deck seemingly float above the trees, forming a dramatic frame for this majestic hillside retreat.

Light. Southern exposure. Floor to ceiling tempered glass. Forested views, city and mountains. Expansive ceilings and comforting space abound.

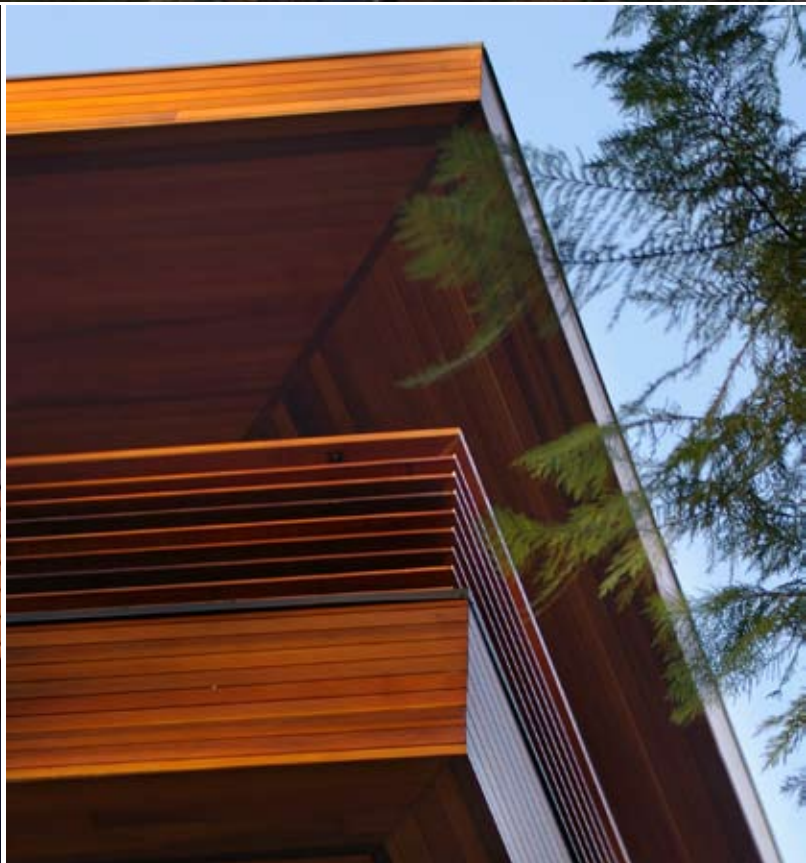
- 3 bedrooms plus office/ 4th bedroom suite
- 3 and 1/2 baths
- Lounge, living and dining rooms all feature fireplaces and patios.
- Brilliant kitchen with casual eating bar adjacent to cantilevered entertaining deck.
- Large clear span garage with commercial roll up door.
- Utility room plus extra storage/wine cellar room.
- Ultra modern technology and mechanics.
- Artisan craftsmanship using finest natural materials.

- 4042 s.f. living
- 946 s.f. garage
- 1179 s.f. decks

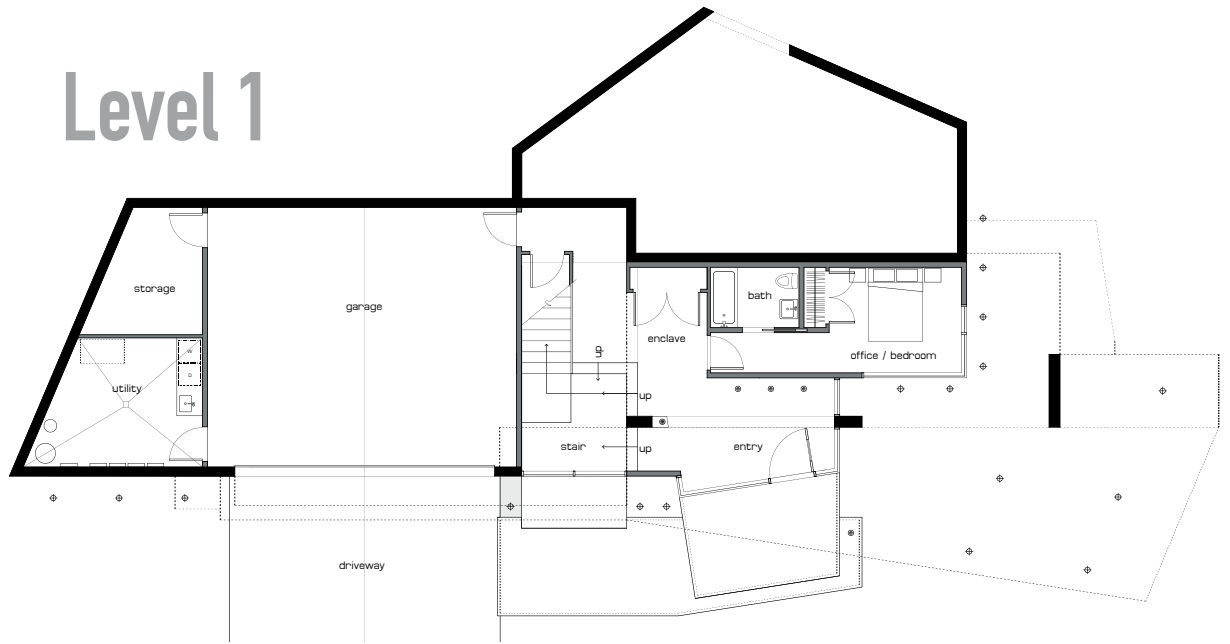
Functional, beautiful, built for generations.



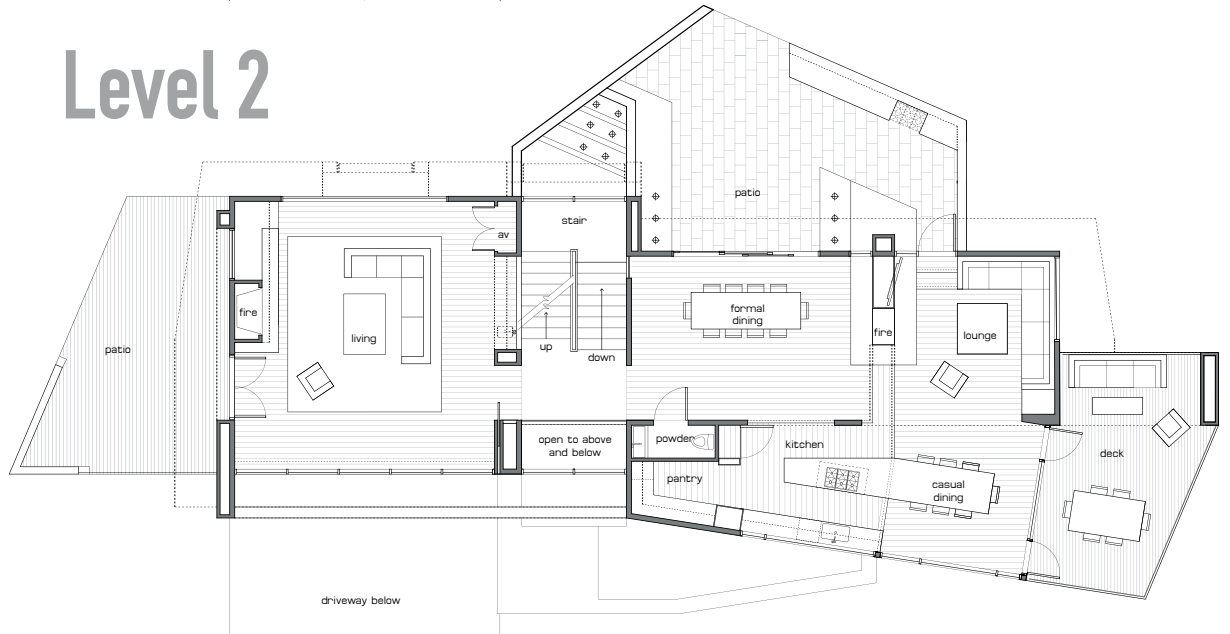




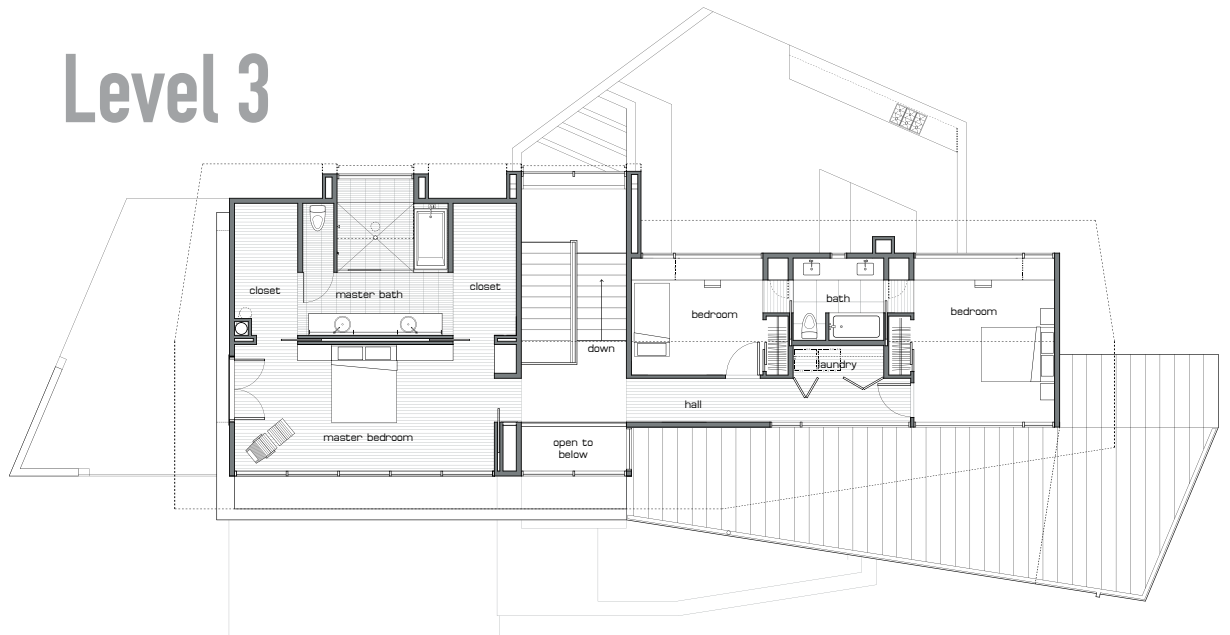
# Level 1



# Level 2



# Level 3



Architect: Jeff Kovel  
Skylab Design Group  
www.skylabdesign.com  
Interiors: Lucy Metcalf  
General Contractor: Charles Metcalf  
Engineering: Tim Terich  
Froelich Consulting Engineers, Inc.  
Principal Broker: Laurie Holland



503 497 5147

[www.laurieholland.com](http://www.laurieholland.com)

[www.3333Q.com](http://www.3333Q.com)